



## *Elegant Image Gallery*

### Contents:

Description	2
Add New Gallery	3
Add Images	5
Place Gallery	8

# Description

The Elegant Image Gallery is an easy way to organize photos into unique galleries showcasing thumbnail images that enlarge upon mousover. Each gallery can display up to 12 images and each image can be linked to a webpage, file or product details page. Create an unlimited number of galleries and place them on any page of your website.

ProFusion UIS | View Website **PROFUSION** Website Backend | Profile | Quick Links | Logout

**CONTENT**

- Home Page
- Inner Pages
- Sitemap
- Terms and Conditions
- Privacy Policy
- Vertical Column Section
- Footer Section

**SECURE USERS**

- Register Page
- Login Page
- Registered Users
- Users Page Content
- Secure Zones/Pages

**WEBMASTER**

- Change Profile
- Change Password
- Settings
- Flash Images
- Header Images

**ADVANCED FEATURES**

- Elegant Image Gallery
- Form Builder
- Survey Manager

**Welcome** to the backend of JuneQss3

Please follow the links on the left column to proceed

The Date and Time on the servers is currently 7/7/2011 2:04:58 PM

**Storage**

Free Space	Used Space
<b>1025.24 MB</b>	<b>24.76 MB</b>
File System : 979.3 MB	File System : 20.7 MB
Database : 45.94 MB	Database : 4.06 MB

**Quick Links**

General Help	Editor Help
User Manuals and Product Videos	Editor Template Variables
Support Center	License Agreement

## Finding the Module

The left side of the main administrative page is divided into various sections. Each section deals with a specific functionality of the Ultra IS application like Content, Secure Users, Help, Webmaster, Advanced Features, etc. Slideshow Gallery is part of the Advanced Features of the ProFusion Ultra IS application.

# Add New Gallery

In order for your images to be displayed on the website, you need to create a gallery first into which you can then upload images. This is similar to having an album where you would have all your photos grouped together.

1. Click on Elegant Image Gallery link under Advanced Features section heading from the main admin page screen as shown above.
2. This action takes you to the Gallery main page screen which looks something like the figure shown below. In this screen you can add, edit, or delete gallery/images.

Figure 1.1

List Galleries	Add New Gallery	
[Add New Gallery]		
<input type="checkbox"/>	GALLERY NAME [TPL_VARIABLE]	ADD/EDIT IMAGES
-- No Record found --		
<b>Legend</b>		
 Add Images to Gallery		
 Activated Gallery		
 De-activated Gallery		

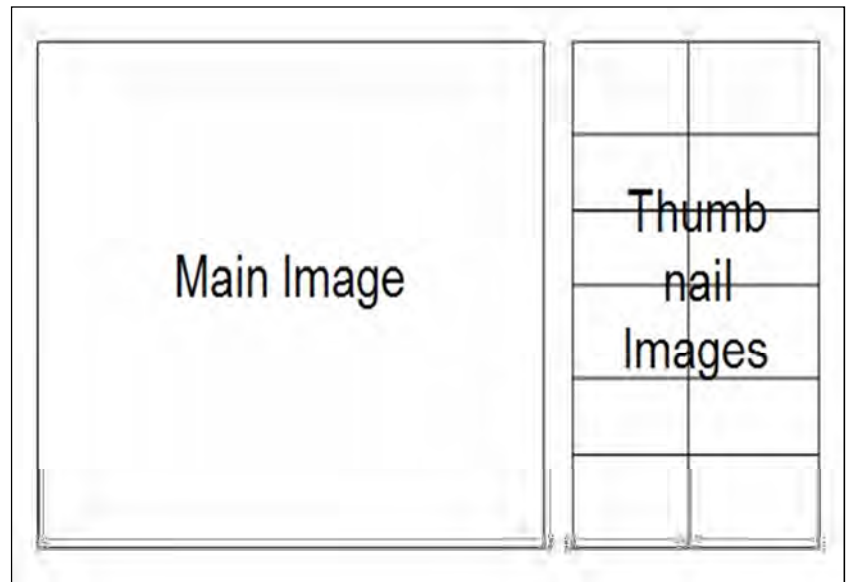
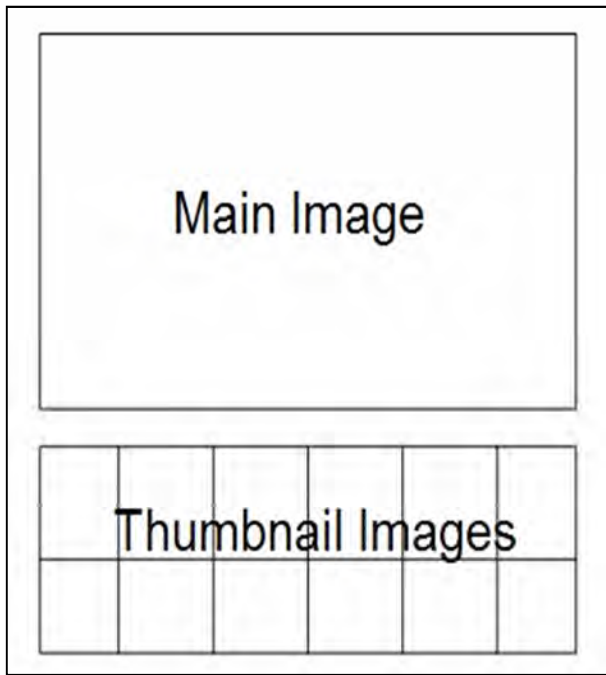
3. Click either the [Add New Gallery] link that you see above the Gallery Name heading or the Add New Gallery link placed on top of the screen.
4. You will be presented with a new Add Gallery screen like shown in the figure below.

List Galleries	Add New Gallery
(Fields marked * is mandatory)	
<b>ADD GALLERY</b>	
Image Gallery Name *	<input type="text"/>
Image Gallery Images Width *	<input type="text" value="450"/> px
Image Gallery Images Height *	<input type="text" value="370"/> px
Image Gallery Orientation *	Horizontal <input type="radio"/> Vertical <input checked="" type="radio"/>
Description	<input type="text"/>
<input type="button" value="Save"/> <input type="button" value="Cancel"/>	

5. **Image Gallery Name** – **Type** in the name of the gallery that you want to create in this box. This name will not be displayed on your website. It is provided to help you identify various galleries that you might have on your website and for easy reference. For this tutorial, we shall name the gallery as “Gallery1.”
  6. **Image Gallery Images Width** – This allows you to set the width of the images in a gallery. **Type** the width of the images (in pixels) that you want to display in your gallery. In this case, we will set the image width at 450 pixels.
  7. **Image Gallery Images Height** – This allows you to set the height of the images in a gallery. **Type** the height of the images (in pixels) that you want to display in your gallery. We will set the image height at 370 pixels for this tutorial.
  8. **Image Gallery Orientation** – This allows you to choose either **Horizontal**  **Vertical**  display for your gallery on your website. Let us choose Vertical orientation for this tutorial.
- Note:** If Horizontal display is selected, the thumbnail images will display in horizontal rows below the main image. Conversely, if Vertical display is selected, the thumbnail images will display vertically next to the main image like shown in the figures below. In both horizontal and vertical displays, the size of the thumbnail images is dynamically adjusted proportionate to the size of the main image.
9. **Description** – This is an optional field. If you would like to have a description for the gallery, **Type** in the details in this box and it will display on the website above the main image.
  10. Click **Save** to save your gallery. You will now be presented with a new Add/Edit Images screen (see figure below) prompting you to add images to the gallery that you have just created.

Horizontal

Vertical

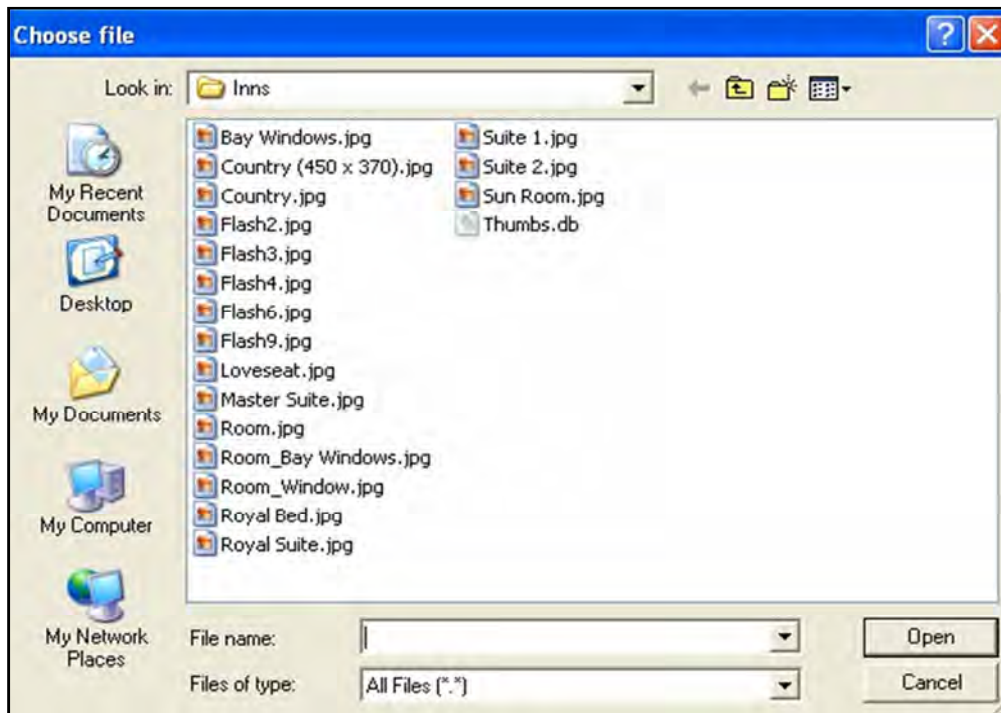


## Add Images

Once you have created a new gallery, the next step is to start adding images. To add images:

List Galleries	Add New Gallery
<b>ADD IMAGES TO GALLERY .</b>	
Recommended Large Image size 450 X 370 pixels. Caption text will be displayed on Thumbnail image with mouse pointer. Link field can be used to link thumbnail image to internal or external page. Link e.g. www.netsolutionsna.com <b>Please Note - Gallery will not display properly at front end if there are no images associated with it.</b>	
<b>Image 1</b>	<input checked="" type="radio"/> <b>Upload New Image:</b> <input type="text"/> <input type="button" value="Browse..."/>
	<input type="radio"/> <b>Use Available Image:</b> <input type="text"/>
	<b>Caption:</b> <input type="text"/>
	<b>Link:</b> <input type="text"/>
	<b>Open Link in :</b> <input checked="" type="radio"/> Same window <input type="radio"/> New window
<b>Image 2</b>	<input checked="" type="radio"/> <b>Upload New Image:</b> <input type="text"/> <input type="button" value="Browse..."/>
	<input type="radio"/> <b>Use Available Image:</b> <input type="text"/>
	<b>Caption:</b> <input type="text"/>
	<b>Link:</b> <input type="text"/>
	<b>Open Link in :</b> <input checked="" type="radio"/> Same window <input type="radio"/> New window

1. **Upload New Image** – When you create a gallery for the first time, you will be using this option to upload an image. **Select** this radio button and **Click**  .
2. This action opens a Choose File pop-up window (see figure below) prompting you to search all folders in your hard drive and choose the image you want to upload into the gallery. **Select** the image and **Click**  or simply **Double-Click** the image to upload.



3. **Use Available Image** – If you want to display an already uploaded image, you will use this option. **Select** this radio button and **Paste** the “Path” link of the image you would like to use. The path for the image can be found at the bottom of the image in the gallery as shown in this figure below.

**Note:** Upload all the images into the gallery by repeating either step 2 or 3.

**Image 1**     **Upload New Image:**      View Delete

**Use Available Image:**

**Caption:**

**Link:**

**Open Link in :**     Same window     New window

**Path:** [www.yourdomain.com/ImageGallery/graphics/GalleryName/FileName](http://www.yourdomain.com/ImageGallery/graphics/GalleryName/FileName)

4. **Caption** – If you type a caption for an image, it will be displayed on the website on mouse over of the image and below the main image, see [figure 1.4](#). Let us type in a caption “Bay Windows” for the image.

Figure 1.2





5. **Link** – This is a provisional field through which you may hyperlink the images in a gallery to either an internal (within the same website) or an external (any other website) web page. **Type** in the path of the website that you wish to link to the image.

**Note:** For example, if you were to type [www.google.com](http://www.google.com) then **Clicking** on the image will open the Google page in the browser.

6. **Open Link in** – Should you wish to link the image to a web page, you may do so by choosing to open the page in a new browser window or same browser window by **Selecting**  Same window  New window as appropriate. See [figure 1.2](#).

7. Once you are finished uploading images, **Click Save** at the bottom of the page to save the uploaded images. In this tutorial, now we have created a gallery named “Gallery1” with images in it.

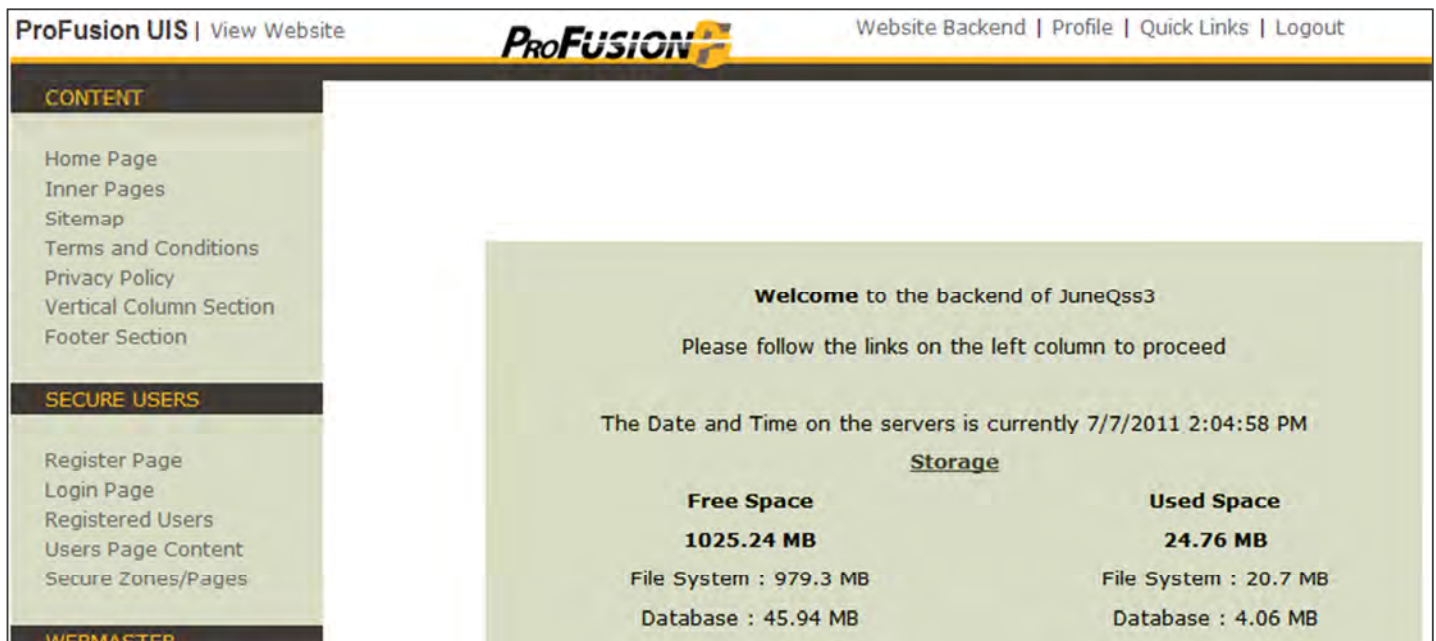
List Galleries		Add New Gallery	
[Add New Gallery]			
SHOWING 1 - 2 of 2		« First   Previous Page 1 of 1 Next   Last »	
<input type="checkbox"/>	GALLERY NAME	[TPL_VARIABLE]	ADD/EDIT IMAGES
<input checked="" type="checkbox"/>	Gallery 1	[TPL_ELEGANT_GALLERY_1]	
<input checked="" type="checkbox"/>	Gallery 2	[TPL_ELEGANT_GALLERY_2]	
Activate Gallery(ies) <input type="button" value="Go"/>			
<b>Legend</b>			
Add Images to Gallery			
Activated Gallery			
De-activated Gallery			

**Note:** You may create as many galleries as you want in your website. Simply follow the above steps to create galleries and upload images. Once the galleries are created, the Gallery main screen page should look like the figure below. All your galleries would now be listed here. From here, you can edit the gallery and/or the images. To edit the properties of a gallery, **Click** on the gallery name. To add/edit images in a gallery, simply **Click**  arrow of the corresponding gallery. To activate, deactivate, or delete a gallery, **Click**  arrow and **Select** as appropriate from the drop down menu. An activated gallery would have a  sign next to it whereas a deactivated gallery would have a  sign next to it and its images would not display on the frontend.

## Place a Gallery

To place the gallery (Gallery1) that you have just created on your web page:

1. **Click** Inner Pages link on the left hand section of the main administrative page screen.
2. This action takes you to the Main Pages screen where all your web pages will be



ProFusion UIS | View Website **ProFusion** Website Backend | Profile | Quick Links | Logout

**CONTENT**

- Home Page
- Inner Pages
- Sitemap
- Terms and Conditions
- Privacy Policy
- Vertical Column Section
- Footer Section

**SECURE USERS**

- Register Page
- Login Page
- Registered Users
- Users Page Content
- Secure Zones/Pages

**WEBMASTER**

**Welcome** to the backend of JuneQss3

Please follow the links on the left column to proceed

The Date and Time on the servers is currently 7/7/2011 2:04:58 PM

**Storage**

Free Space	Used Space
<b>1025.24 MB</b>	<b>24.76 MB</b>
File System : 979.3 MB	File System : 20.7 MB
Database : 45.94 MB	Database : 4.06 MB

listed as shown below. **Click** the page on which you want to display your gallery. In this case, we will **Select** About Us page. This takes you to the About Us page edit screen. See [figure 1.3](#) below.



Home » Main Pages

[Add Page]

Showing 1 - 6 of 6      « First | Previous Page 1 of 1 Next | Last »

	<input type="checkbox"/>	SECTION TITLE	ORDER	SECONDARY PAGES
✓	<input type="checkbox"/>	Services	↑ ↓	➔ [0]
✓	<input type="checkbox"/>	Events	↑ ↓	➔ [0]
✓	<input type="checkbox"/>	Our History	↑ ↓	➔ [0]
✓	<input type="checkbox"/>	Contact Us	↑ ↓	➔ [0]

Activate Page(s)   

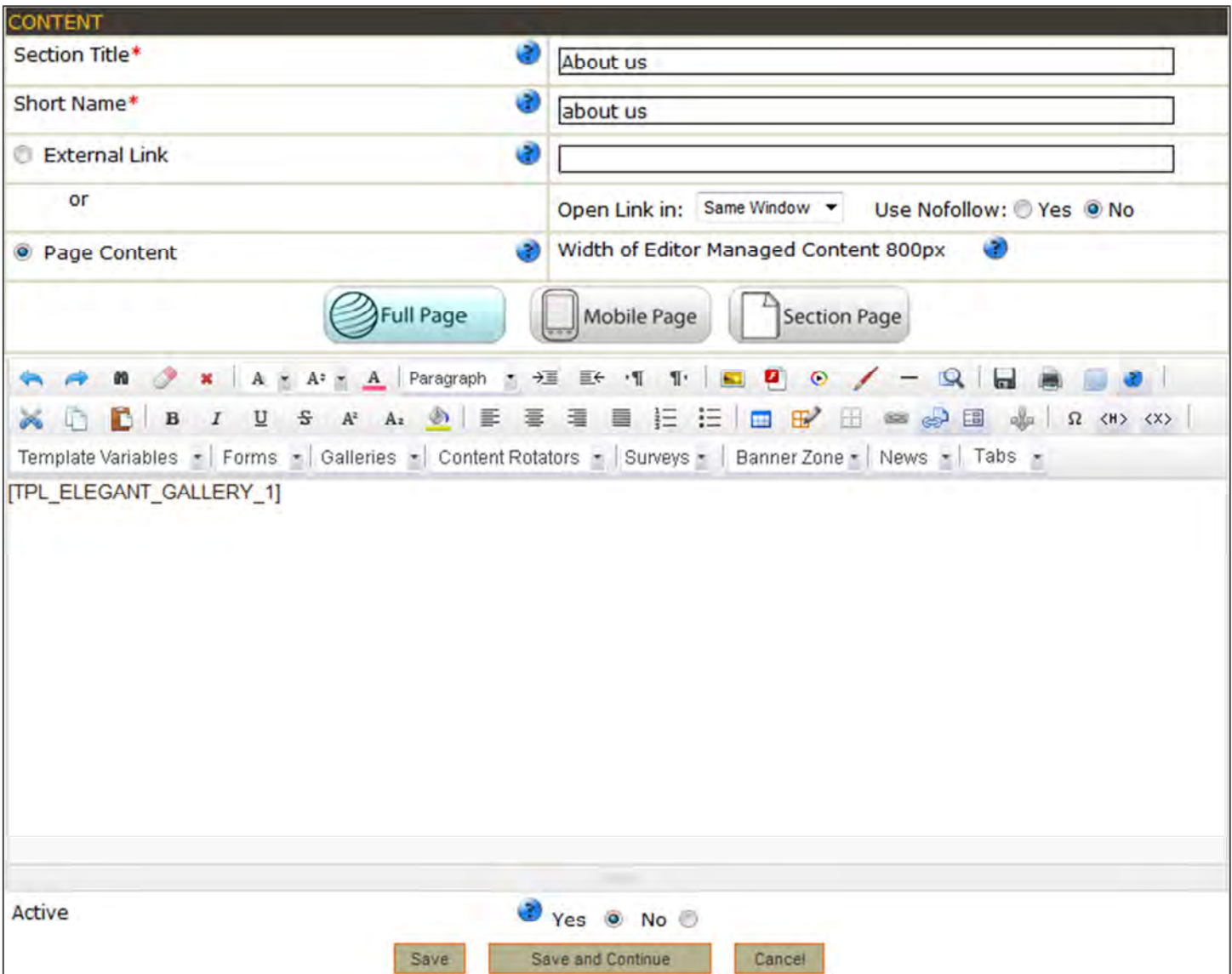
**Legend**  
 ✓ Active Pages

- If you would like to have text along with the gallery on your web page, **Type** in the content using the page editor.
- Position** the cursor inside the text area where you would like the gallery displayed and **Select** the gallery that you want to use from the Elegant Image Galleries drop down menu as shown in figure 1.3 below. This action places the gallery on your web page. In this case, we will **Select** "Gallery1" from the menu.

Figure 1.3

The screenshot shows a web page editor interface. At the top, there's a 'CONTENT' section with several fields: 'Section Title\*' (containing 'About us'), 'Short Name\*' (containing 'about us'), 'External Link' (empty), and 'Page Content' (containing 'Width of Editor Managed Content 800px'). Below these fields are three buttons: 'Full Page', 'Mobile Page', and 'Section Page'. A rich text editor toolbar is visible, with a 'Galleries' dropdown menu open, showing a list of gallery options: 'Gallery 1', 'Gallery 2', 'test', and 'testtt'. At the bottom of the editor, there are 'Active' radio buttons (Yes, No) and three buttons: 'Save', 'Save and Continue', and 'Cancel'.

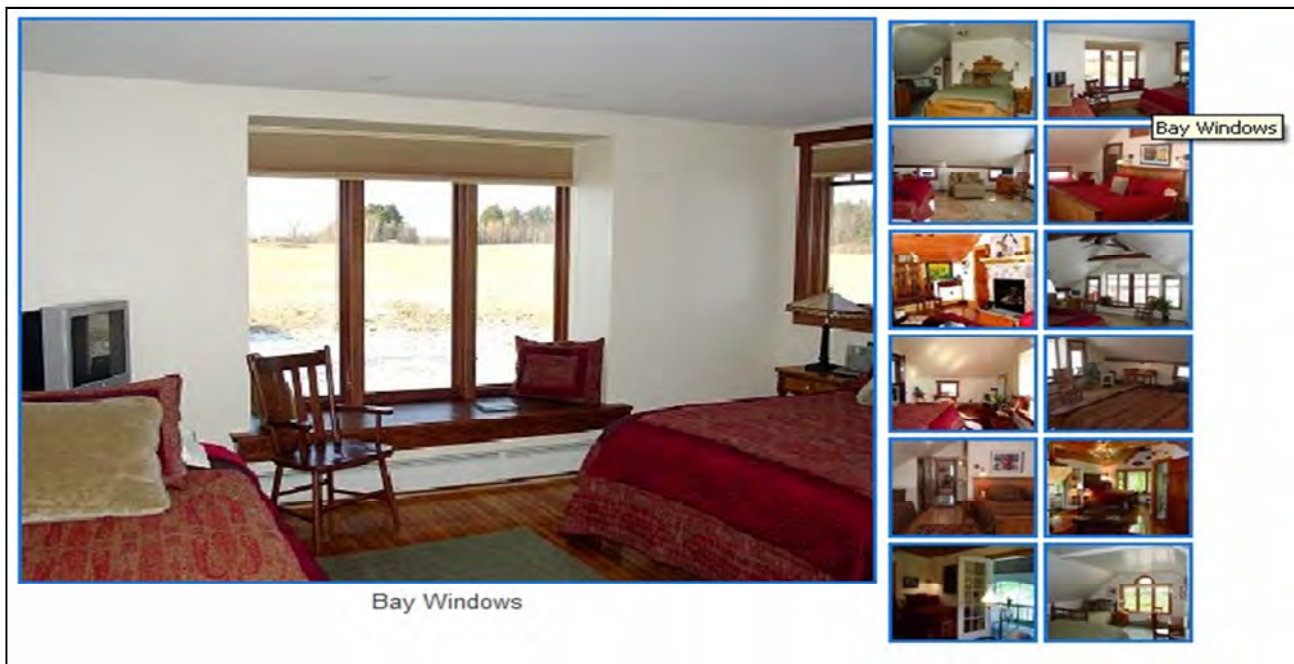
5. Now you will see something like [TPL\_ELEGANT\_GALLERY\_1] inside the page editor area. This command instructs the system to merge in the gallery you have just placed on the page. The page editor should now look like the figure below.



6. Click **Save** button to save the page edits.

You have now successfully created a gallery and placed it on your web page. The first figure you see below is the frontend display of a Vertical gallery on your web page. You can see the image caption that you entered earlier on image mouse over. The second figure is how a Horizontal gallery would display on your website.

Figure 1.4



**Note:** You can also have more than one gallery displayed in a web page. To display multiple galleries in your web page, simply repeat step 4 as above. You may also choose a vertical display for one gallery and a horizontal display for another when placing more than one gallery in a web page.

