



Slideshow Gallery

Contents:

| | |
|--------------------|---|
| Description | 2 |
| Add New Gallery | 3 |
| Add Images | 4 |
| Edit/Delete Images | 6 |
| Modify Gallery | 7 |
| Place Gallery | 7 |

Description

A Slideshow Gallery allows an administrator to upload any number of images in both landscape and portrait format and have them display in their proper orientation without having to crop or resize the images. Create an unlimited number of galleries that play in a slideshow rotation when opened full size.

ProFusion UIS | View Website **PROFUSION** Website Backend | Profile | Quick Links | Logout

CONTENT

- Home Page
- Inner Pages
- Sitemap
- Terms and Conditions
- Privacy Policy
- Vertical Column Section
- Footer Section

SECURE USERS

- Register Page
- Login Page
- Registered Users
- Users Page Content
- Secure Zones/Pages

WEBMASTER

- Change Profile
- Change Password
- Settings
- Flash Images
- Header Images

ADVANCED FEATURES

- Elegant Image Gallery
- Form Builder
- Slideshow Image Gallery

Welcome to the backend of JuneQss3

Please follow the links on the left column to proceed

The Date and Time on the servers is currently 7/7/2011 2:04:58 PM

Storage

| Free Space | Used Space |
|------------------------|-----------------------|
| 1025.24 MB | 24.76 MB |
| File System : 979.3 MB | File System : 20.7 MB |
| Database : 45.94 MB | Database : 4.06 MB |

Quick Links

| | |
|---------------------------------|---------------------------|
| General Help | Editor Help |
| User Manuals and Product Videos | Editor Template Variables |
| Support Center | License Agreement |

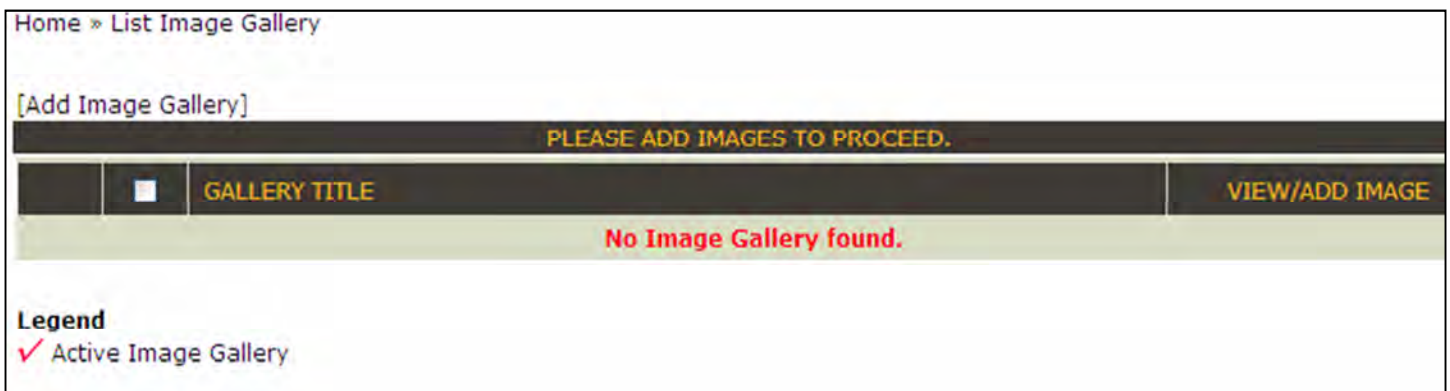
Finding the Module

The left side of the main administrative page is divided into various sections. Each section deals with a specific functionality of the Ultra IS application like Content, Secure Users, Help, Webmaster, Advanced Features, etc. Slideshow Gallery is part of the Advanced Features of the ProFusion Ultra IS application.

Add New Gallery

In order for your images to be displayed on the website, you need to create a gallery first into which you can then upload images. This is similar to having an album where you would have all your photos grouped together.

1. Click on [Slideshow Gallery](#) link under the Advanced Features section heading from the main admin page screen as seen above.
2. This action takes you to the Gallery main page screen which looks something like the figure shown below. This screen allows you to control and modify the galleries by adding, editing, or deleting the galleries and/or the images.



3. Click on the [\[Add Image Gallery\]](#) link you see above the Gallery Title heading bar.
4. You will be taken to the Add / Edit Image Gallery screen like the one shown below here.

Home » List Image Gallery » Add / Edit Image Gallery

(Fields marked * is mandatory)

ADD GALLERY

Gallery Name*

5. **Gallery Name** – Type the name of the gallery in this box. This name will not be displayed on your website. It is provided to help you identify various galleries that you

might have on your website and for easy reference. For this tutorial, we shall name the gallery as Interiors.

6. Click **Add Gallery** button to save your gallery. You will now be presented with the List Images page screen (see figure below) where you can start adding images to the gallery that you have just created.

List Images Page Screen

| [Add Images] | | | |
|--------------------------|------------|---------------|------------|
| <input type="checkbox"/> | IMAGE NAME | IMAGE CAPTION | EDIT IMAGE |
| No Image found. | | | |
| Legend | | | |
| ✓ Active Images | | | |

Add Images

1. **Add Images** – When you create a gallery for the first time, you will be using this option to upload an image to the gallery. Click the [\[Add Images\]](#) link.
2. This action opens the Add/Edit Image page screen like the one shown here which allows you to upload a maximum of 10 images at a time. You may also type in a caption for the images if you like. Click the **Browse...** button.

Home » List Images » Add/Edit Image

*Fields marked * are required*

| GALLERY IMAGES | |
|-----------------|---|
| Browse Image 1* | <input type="text"/> <input type="button" value="Browse..."/> |
| Image Caption 1 | <input type="text"/> |
| Link 1 | <input type="text"/> |
| Browse Image 2* | <input type="text"/> <input type="button" value="Browse..."/> |
| Image Caption 2 | <input type="text"/> |
| Link 2 | <input type="text"/> |
| Browse Image 3* | <input type="text"/> <input type="button" value="Browse..."/> |

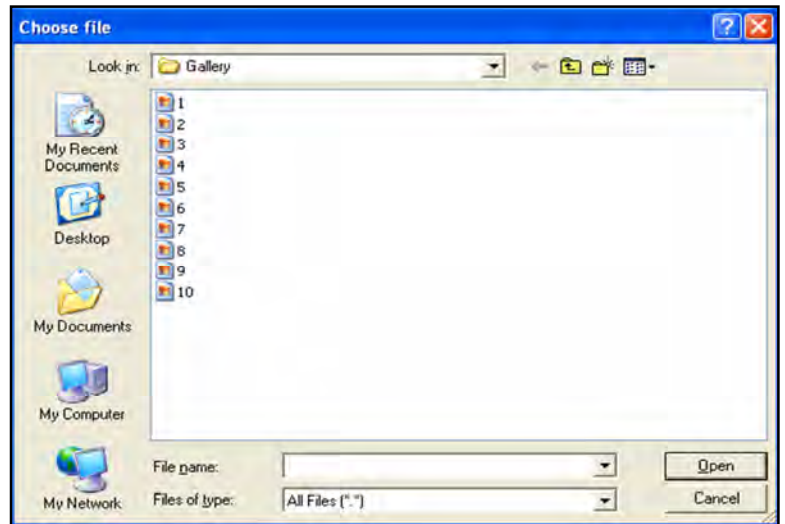
3. This action opens a Choose File pop-up window (see figure below) prompting you to

search all folders in your hard drive and choose the image you want to upload into the gallery.

4. **Select** the image and **Click** **Open** or simply **Double-Click** the image to upload the image. Repeat steps 2 and 3 until you have uploaded all the images. The Browse input box will now display the file path of the images uploaded as shown below.

5. **Type** in captions for your images, if desired.

6. **Type** in a website addresses if you want one of your pictures to link to a webpage.




| | | |
|------------------|---------------------------|-----------|
| Browse Image 9* | C:\Users\Public\Pictur | Browse... |
| Image Caption 9 | Image 9 | |
| Link 9 | www.google.com | |
| Browse Image 10* | C:\Users\Public\Pictur | Browse... |
| Image Caption 10 | Image 10 | |
| Link 10 | www.profusionproducts.com | |
| | Upload | Cancel |

7. To finish uploading **Click** the **Upload** button placed at the bottom of the page screen.

8. Once the images are uploaded to the Ultra IS application, you will be presented with the List Images page screen once again, only this time you can now see the list of images that you have just uploaded along with their captions if any, that looks similar to the one shown here. The images will be listed along with a ✓ tick mark next to them which indicates that they are active and thus ready to display on your website. This screen allows you to control and manage the images inside a gallery whereby you can add more images to the gallery, delete the existing ones from it, or simply suspend their display by de-activating them.


Note: To upload more images to an existing gallery, on the Image Gallery page screen, simply **Click** the **[Add Images]** link and follow steps 2 through 5 as above.



Edit/Delete Images

1. On the List Images page screen, Click the  arrow of the corresponding image.
2. This action will take you to the Add/Edit Image page screen like the one shown below. Click the **Browse...** button to replace an existing image by uploading a new one in its place and Click the **Upload** button. Clicking the **View** link opens up the image in a separate window and Clicking the **Delete** link allow you to delete the selected image from the gallery.

Home » List Images » Add/Edit Image

*Fields marked * are required*

| GALLERY IMAGES | |
|--|---|
|  | <p>Browse Image 1* <input type="text"/> <input type="button" value="Browse..."/> View Delete</p> <p>Image Caption <input type="text" value="Image 1"/></p> <p><input type="button" value="Upload"/> <input type="button" value="Cancel"/></p> |

Note: Alternatively, if you want an image to stop displaying on your website but at the same time do not wish to delete it altogether from the gallery, you can go the “Deactivate Image” route. On the List Image main page screen, **Select** the image by **Clicking** inside the box placed next to it. Next **Click** the  down arrow placed next to the drop down menu. You can now see several options in the drop down menu. Simply **Select** the option and **Hit** the **Go** button. This action refreshes the page screen and you will now see the selected image no longer displays the red tick  next to it indicating its inactive status. This will automatically stop its display on your website. To revert back, simply **Select** the option. You may also delete an image from the gallery by **Selecting** the drop down menu as an alternate method to the one explained above.

Modify Gallery

You can modify an existing gallery in various ways like renaming it, de-activating it, or deleting it altogether from the ProFusion Ultra IS application. While choosing the **De-activate** option would stop the gallery and the images inside them from displaying on your website, **Delete** option would delete the selected gallery in its entirety from the application, and should you wish to display it at a later time, you would be required to create the gallery and upload the images once again to the application. To avoid such a situation, it is always best to simply **De-activate** a gallery. To modify a gallery, you would follow the same steps as you did with the images (as explained above), only this time you would be selecting the gallery instead of the image. On the Gallery main page screen, you may select any of the above-mentioned options from the drop down menu to modify an existing gallery.

Place Gallery

Once you have created a gallery and uploaded images to them on the admin side, the next step would be to place the gallery along with its images on your website page for it to be visible on the frontend of your website.

1. **Navigate** to the page where you wish to place the gallery. For this tutorial, we will be using the “Interiors” page. You may type in page content for your web page using the page editor if you wish to have some text along with the gallery on your website.
2. **Position** the cursor inside the page editor area where you would like the gallery displayed and **Select** the gallery that you want to use from the “Galleries” drop down menu as shown in the above figure. This drop down menu will display a list of galleries that are currently active in the system. This action places the gallery on your web page. For this tutorial, we shall select the “Interiors” gallery from the drop down menu.

3. Now you will see something like [TPL_HSGALLERY_1] inside the page editor area. This command instructs the application to integrate the gallery that you have just placed onto your website.

BASIC PAGE DETAILS

*Fields marked * are required*

Save Save and Continue Cancel

CONTENT

Section Title* Interiors

Short Name* interiors

External Link

or Open Link in: Same Window Use Nofollow: Yes No

Page Content Width of Editor Managed Content 800px

Full Page Mobile Page Section Page

Paragraph

Template Variables Forms Galleries Content Rotators Surveys Banner Zone News Tabs

[TPL_HSGALLERY_1]

- Gallery 1
- Gallery 2
- Interiors
- test

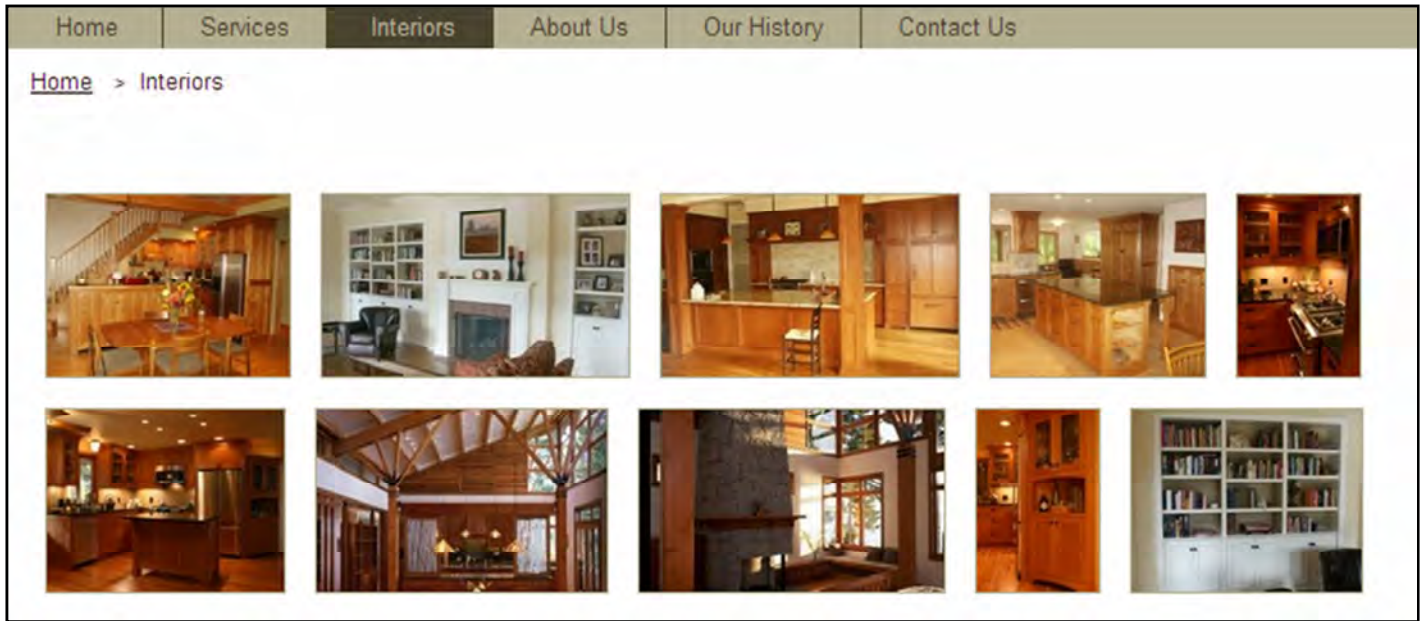
<BODY> <P>

Active Yes No

Save Save and Continue Cancel

4. Click the **Save** button to save the page edits.

You have now successfully created a slideshow image gallery and placed it on your website. When you open the web page, you can now see the slideshow gallery.



What you see below is the slideshow gallery on the frontend of your website. This page screen essentially displays the thumbnail version of the images in your gallery. You can start viewing the images in the slideshow mode by clicking on any image.

This action not only starts the slideshow but also enlarges the thumbnail images. You may use the buttons placed on top of the images or the Previous / Next arrows placed at the bottom to browse through the slideshow.

